



Milwaukee Community Justice Council

Working collaboratively to ensure a fair, efficient, and effective justice system that enhances public safety and quality of life in our community.

Milwaukee County Total Population Brief, January 2011 – August 2014

Jail & Huber Committee

Prepared by Nate Holton

September 15, 2014

I. Introduction

On a weekly basis, representatives of the Office of the Sheriff take a point-in-time snapshot of the inmate population contained in the Milwaukee County Jail and the Milwaukee County House of Correction. This information gets placed into three pie charts¹, which are then distributed to other agency representatives.

For this briefing, all available² weekly pie charts from January 2011 through August 2014 were included. The total combined population of all available weeks within a given month were averaged to provide an average combined population for that month. The resulting information is displayed below.

II. Historical View of the Combined Population

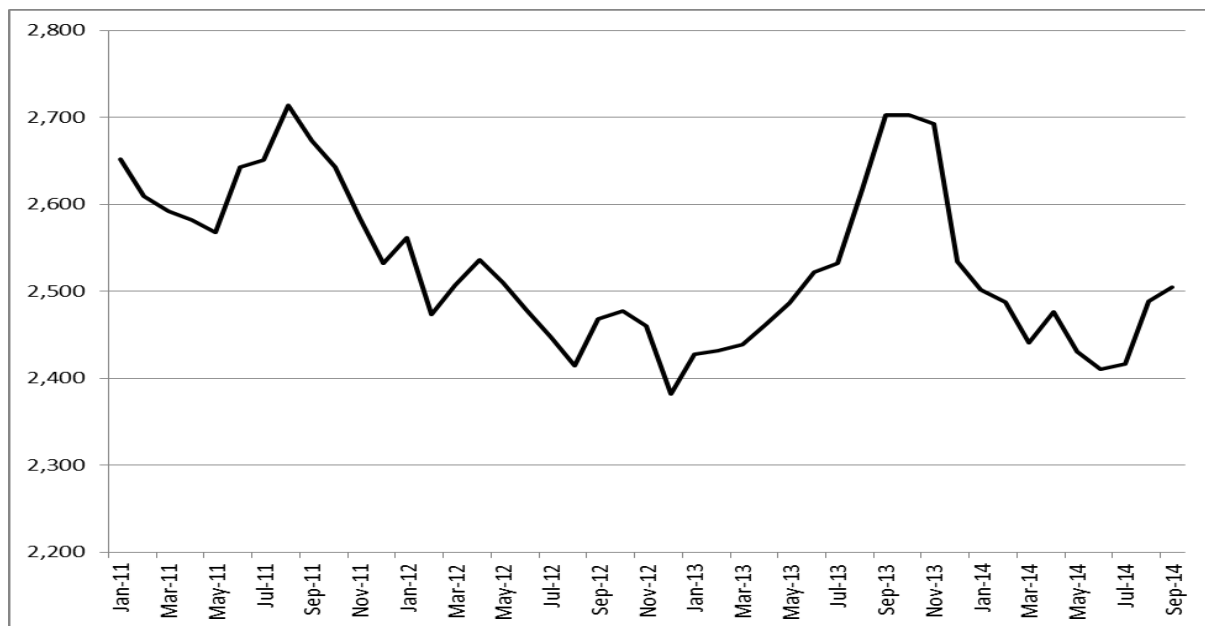


Figure 1: Milwaukee County Combined Inmate Population, January 2011 – August 2014

¹ The pie charts identify the inmate population of the Milwaukee County Jail, the Milwaukee County House of Correction, and the Combined Inmate Population between the two facilities.

² All weeks that were not available are listed in the Appendix.

The combined population during this time period peaked at 2,714 in August 2011. Over the next 16 months, the population went through a steady decline, reaching a low of 2,382 in December 2012. In the next nine months, the population then experienced a steady incline, reaching 2,703 in September 2013 before falling again.

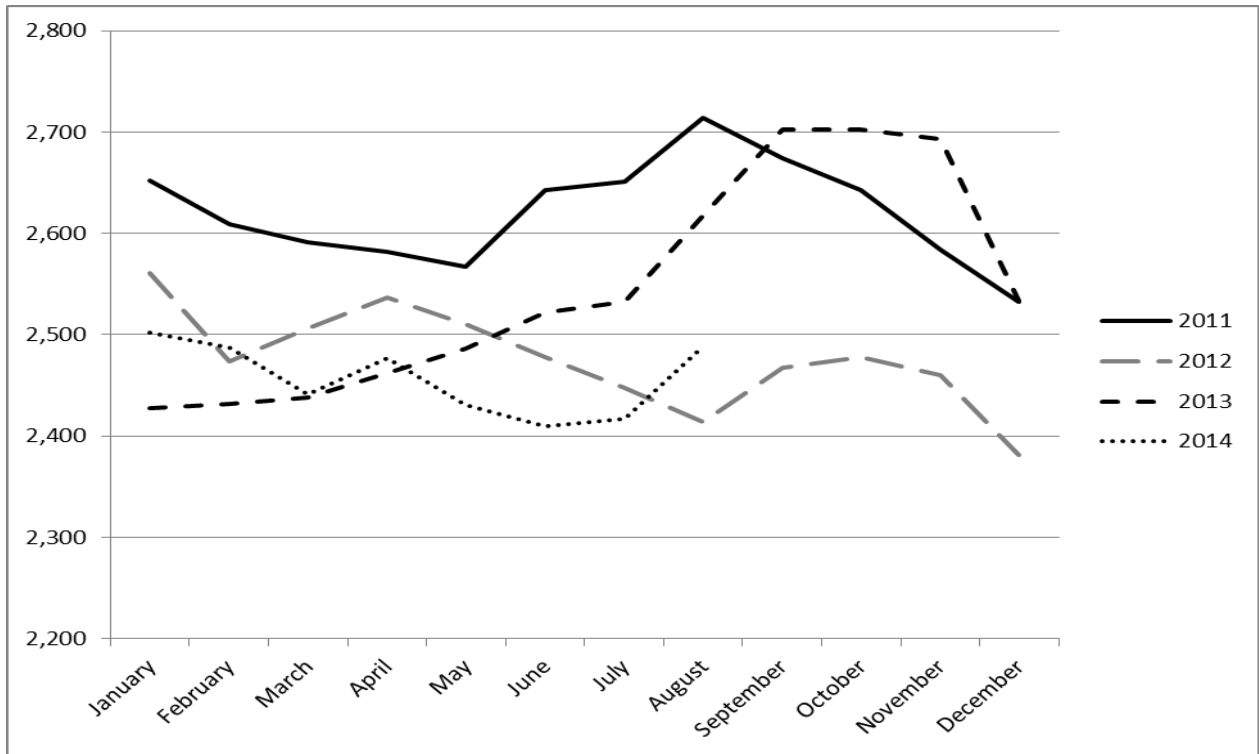


Figure 2: Milwaukee County Combined Inmate Population By Year, 2011 – 2014

The above figure shows the monthly average total population broken out by year. The below figure isolates 2011 and 2014.

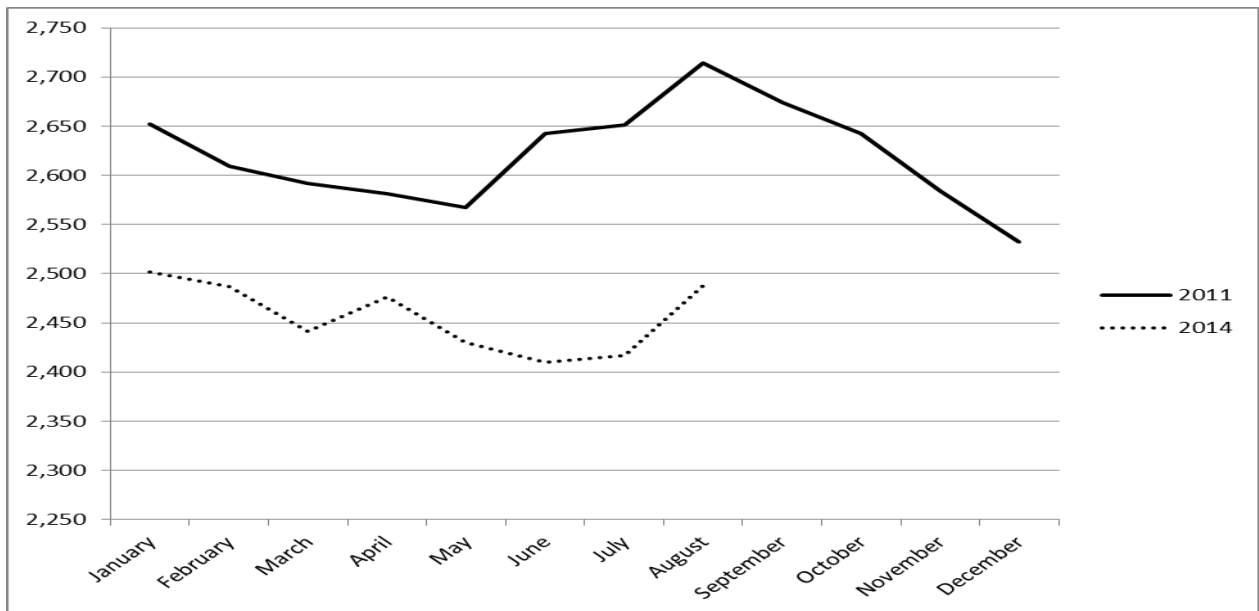


Figure 2: Milwaukee County Combined Inmate Population, 2011 and 2014

The below figure compares the monthly populations of 2011 and 2014 (to date). The monthly reduction in total population from 2011 to 2014 has averaged 170.

	2011	2014	Difference
January	2,652	2,502	150 (5.7%)
February	2,609	2,487	122 (4.7%)
March	2,592	2,441	151 (5.8%)
April	2,582	2,477	105 (4.1%)
May	2,568	2,430	137 (5.3%)
June	2,642	2,410	232 (8.8%)
July	2,651	2,417	234 (8.8%)
August	2,714	2,488	226 (8.3%)
AVERAGE	2,626	2,456	170 (6.5%)

Figure 3: Milwaukee County Combined Inmate Population, 2011 and 2014

Using the cost methodology developed by the Milwaukee County Office of the Comptroller³, the average inmate population reduction between 2011 and 2014 can be converted into a cost difference estimate.

	2011 to 2014
Average Population Reduction	170
Equivalent Daily Cost Difference	\$3,715
Equivalent Yearly Cost Difference	\$1,356,048

Figure 4⁴: Equivalent Cost Difference From the Reduction in Inmate Population From 2011 to 2014

³ See Milwaukee County Office of the Comptroller, Audit Services Division, "Electronic Monitoring can Achieve Substantive Savings for Milwaukee County, but Only if Pursued on a Large Scale with Satisfactory Compliance Rates," October, 2013. This report responded to the wildly varying jail bed day cost estimates cited by various system actors by utilizing a rigorous methodology to generate a realistic marginal cost savings that can be attached to a jail bed day.

⁴See FN9. Daily cost estimates are summarized in Table 5, "Net Reduction in Incarceration Costs from Closing a 60 Bed Dormitory at the Milwaukee County House of Correction (2012 Actual Cost Data)." The daily inmate cost at the House of Correction is \$26.61 in increments of 60 and \$10.44 in increments below 60. To calculate Equivalent Daily Cost Savings, \$26.61 was multiplied by the largest multiple of 60 that was less than the Population Reduction. Then, the difference between the Population Reduction and the largest multiple of 60 that was less than the Population Reduction was multiplied by \$10.44. These two figures were then added together. For example, the Daily Equivalent Cost Savings when excluding Electronic Monitoring/Other from the Population Reduction for a Population Reduction of 163 inmates is (120 inmates x \$26.61) + (43 inmates x \$10.44) = \$3,642.

III. Appendix - Unavailable Weekly Pie Chart Dates

June 1, 2011
June 8, 2011
August 10, 2011
August 24, 2011
September 7, 2011
December 7, 2011
December 28, 2011
February 8, 2012
April 4, 2012
May 2, 2012
June 20, 2012
June 27, 2012
July 4, 2012
July 11, 2012
August 8, 2012
August 15, 2012
November 14, 2012
December 5, 2012
December 12, 2012
May 8, 2013
February 14, 2014
August 6, 2014
August 13, 2014