



# Milwaukee County

Early Interventions Programs

# Introductions

- Why intervene at the front end of the system?
- What is the importance of allocating resources to the Early Interventions Programs for local criminal justice stakeholders?
- What is the importance of Early Interventions Programs to the participants and the greater community?



# Overview

- The Wisconsin Court System
- State and Local Decision Points
- Risk, Need, and Responsivity
- Early Interventions Programs
- Demographic and Outcome Snapshot
- Success, Areas for Improvement, and Future Goals

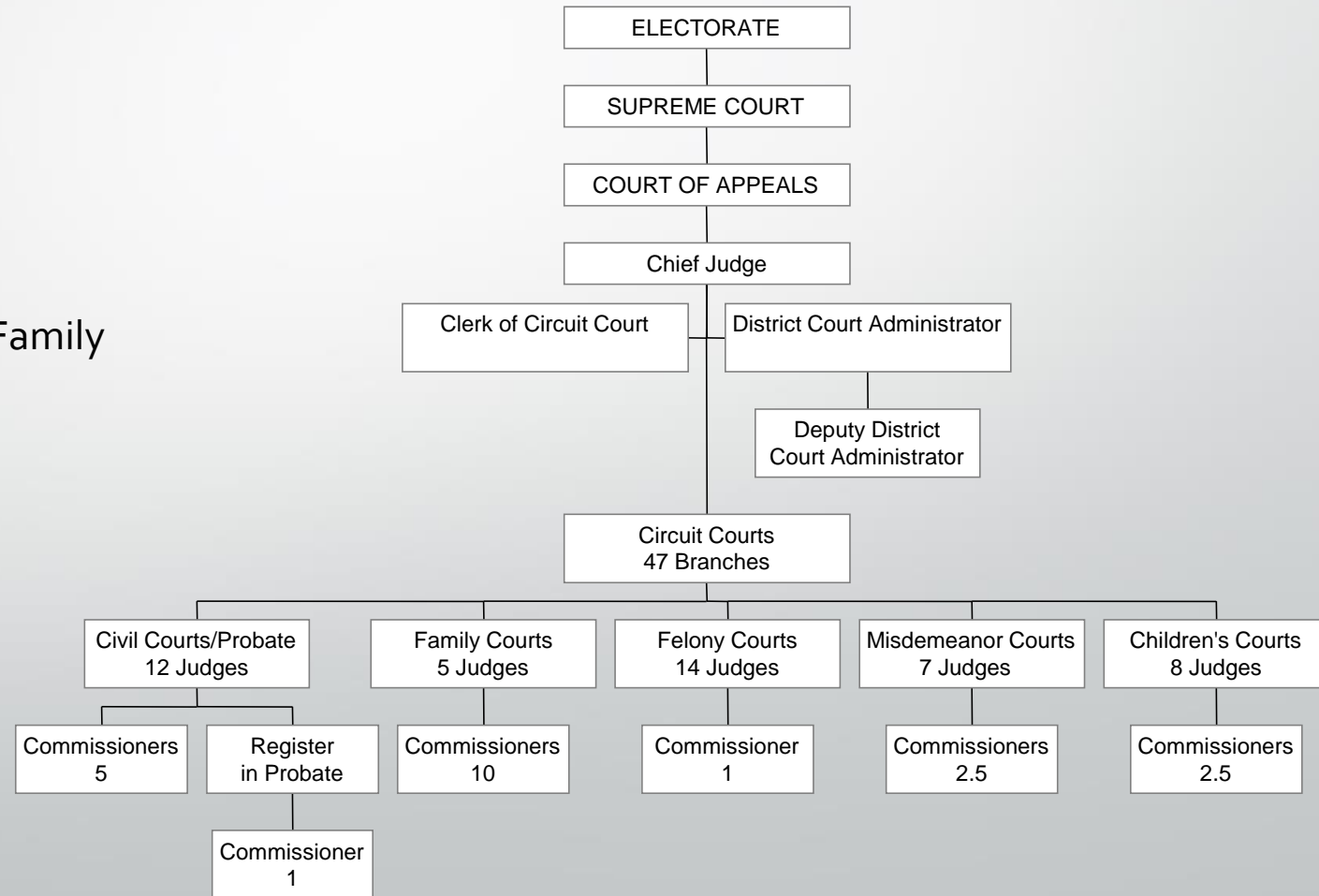
# The Wisconsin Court System

The mission of the Wisconsin's court system is to protect individuals' rights, privileges and liberties, to maintain the rule of law, and to provide a forum for the resolution of disputes, that is fair, accessible, independent and effective.

*Supreme Court Planning and Policy Advisory Committee, July 1994*

## Milwaukee County Courts

- Largest of 10 Wisconsin Districts
- 47 Judges (249 Statewide)
- 22 Court Commissioners
- 5 Divisions (Felony, Misdemeanor, Civil, Family and Juvenile)
- 300 Employees
- Combined State/County Funding



# Risk, Need, and Responsivity



## Risk Principle

- Accurately identify the level of risk to maximize the investment of resources.



## Needs Principle

- Know the needs of individual offenders and how those needs relate to recidivism.



## Responsivity Principle

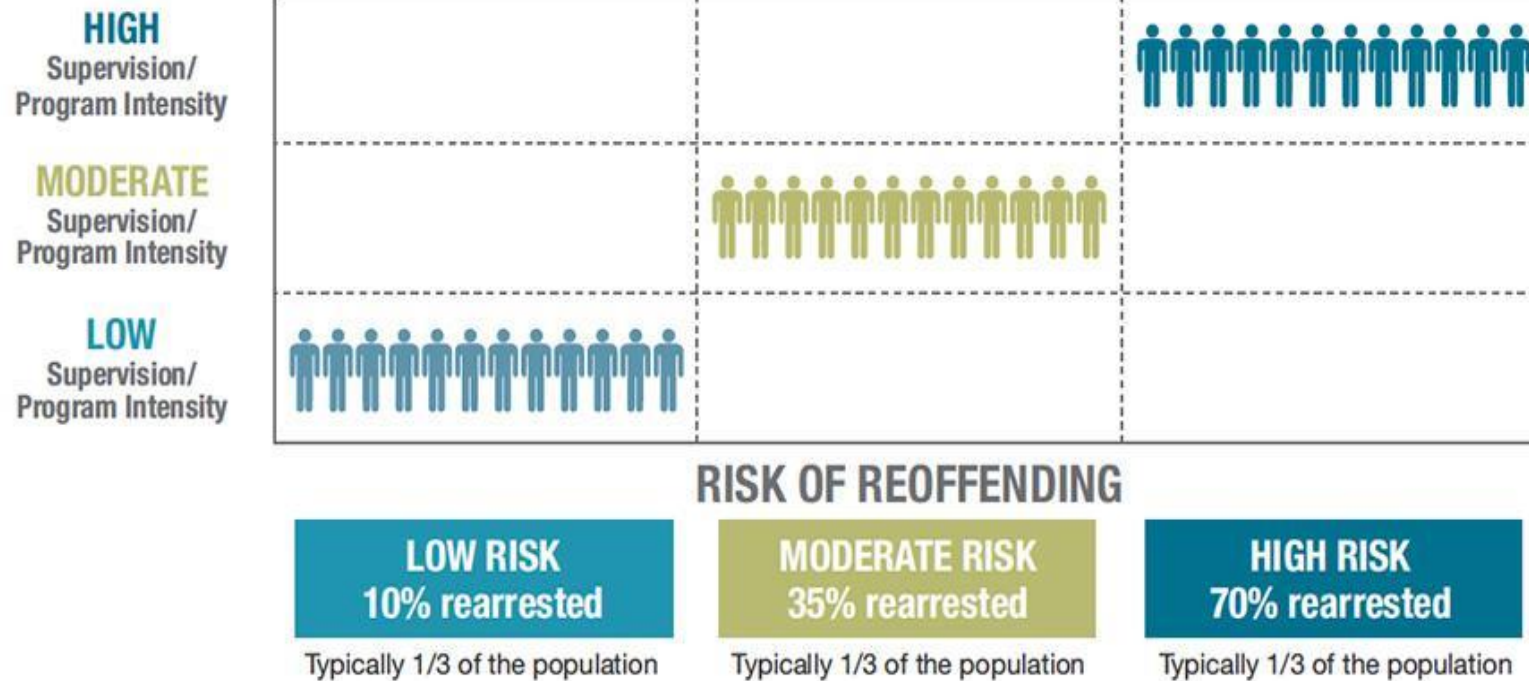
- Treat the offender's criminogenic needs through appropriate programming and supervision tailored to the individual characteristics of the person/group.

# Risk, Need, and Responsivity

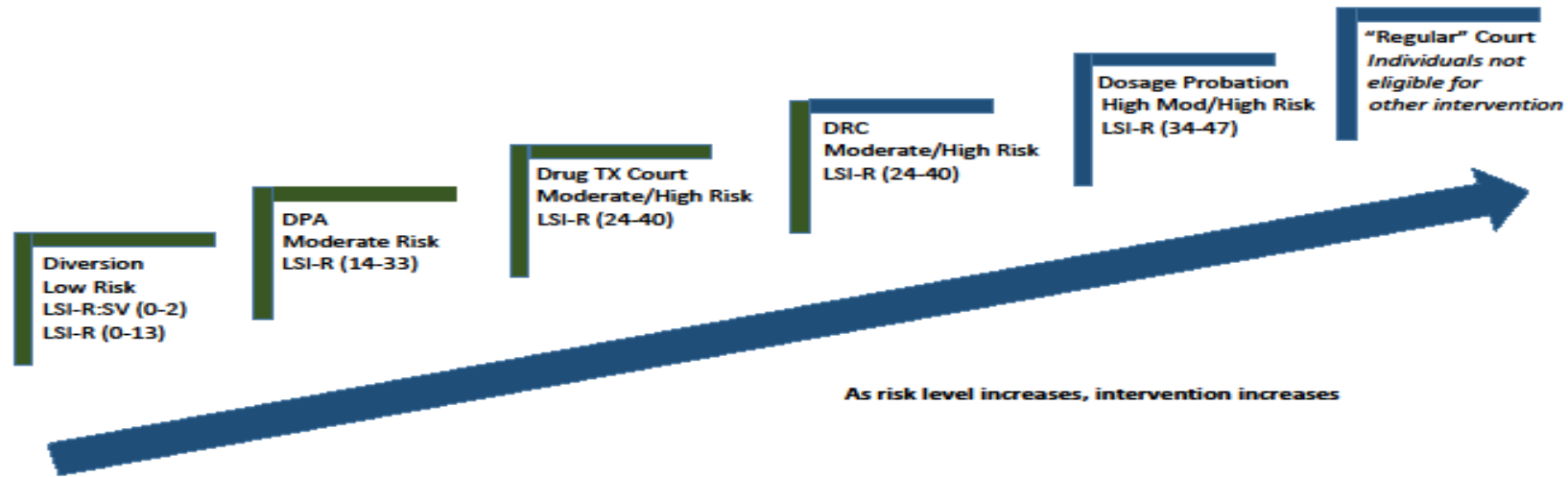


# Risk Level and Programming

FIGURE 1. EXAMPLE OF PROVIDING INTENSITY OF PROGRAMMING BASED ON RISK



# A Continuum of Programs



**Key**

Green = Pre-adjudication options

Blue = Post adjudication options



# Diversion

## Criteria

- Pre charge
- Low risk
- Eligible clients must meet Milwaukee County Early Intervention criteria
- Agreements start at 6 months in length
- Agreements can be extended

## Agreement

- Agreements are crafted primarily for accountability and may contain a variety of conditions
- “Hands off approach”
  - Evidence indicates low risk clientele do not require traditional interventions to be successful.
- All supervision is done through the Early Interventions Unit operated by JusticePoint

# Deferred Prosecution

## Criteria

- Post charge-pre sentence
- Moderate/moderate-high risk
- Eligible clients must meet Milwaukee County Early Intervention criteria
- Agreements start at 6 or 9 months in length
- Agreements can be extended

## Agreement

- Agreements are crafted with accountability and behavior change components and may contain a variety of conditions
- “Dosage based approach”
  - All programming and case management is determined using the risk/needs assessment
  - Interventions are targeted to maximize resources and improve outcomes
- Supervision is done through various community agencies

# Drug Treatment Court

## Criteria

- Post charge-pre sentence
- Moderate-high/high risk
- Milwaukee County Resident
- Eligible clients must meet Milwaukee County Early Intervention criteria
- Must have sentencing recommendation of minimum 9 months HOC straight time
- 12-18 month duration

## Agreement

- Agreements are crafted with accountability and behavior change components and may contain a variety of conditions
- “Dosage based approach”
  - All programming and case management is determined using the risk/needs assessment
  - Interventions are targeted to maximize resources and improve outcomes
- All supervision and cognitive behavioral programming is done through the Early Interventions Unit operated by JusticePoint
- Clients also work with a Recovery Support Coordinator assigned through the Milwaukee County Behavioral Health Division

# Additional Programs

## Veteran's Treatment Initiative

(VTI)

- Pre and post charge
- Diversion, DPA, and DTC tracks used
- Ranges from low risk to high risk
- Center for Veterans Issues and Veterans Administration primary service providers
- Over 250 Veterans have been serviced and linked with services
- Program has a 77% graduation rate

# Demographics & Outcomes

*\* These numbers represent those supervised by JusticePoint only.*

## Drug Treatment Court Since 2017

- 196 Entered into DTC
- 73% Male      27% Female
- 30% Black 59% Caucasian 8% Hispanic  
3% Other Race Identified

- 121 Agreements Closed from Supervision
- 48% Charges Dismissed/Reduced
- 9,430 Prison Bed Days Saved
- 3,090 Jail Bed Days Saved

*\* Prison/Jail Bed Days Saved only represent 50% of those that completed successfully. These numbers were not captured in the previous database for this program.*

# Demographics & Outcomes

*\* These numbers represent those supervised by JusticePoint only.*

## Diversion Agreements Since 2014

- 1391 Entered into Diversion Agreement
  - 67.1% Male      32.9% Female
  - 46.2% Black   35.0% Caucasian   13.3% Hispanic  
5.5% Other Race Identified
- 1253 Agreements Closed from Supervision
  - 81.6% No Charges Issued
  - 64,775 Jail Bed Days Saved

# Demographics & Outcomes

*\* These numbers represent those supervised by JusticePoint only.*

## Deferred Prosecution Agreements Since 2014

- 1453 Entered into DPA
- 66.6% Male      33.4% Female
- 35.5% Black   51.5% Caucasian   9.4% Hispanic  
3.6% Other Race Identified
- 1314 Agreements Closed from Supervision
- 71.6% Charges Dismissed/Reduced
- 6,110 Prison Bed Days Saved
- 107,925 Jail Bed Days Saved

# Where Have We Succeeded?

- Since 2014 roughly 5,000 hours of community are completed per year
- To date \$630,509.92 in restitution has been collected by the Public Defender's Office
- People are avoiding collateral consequences of a criminal conviction
- Mothers are able to continue parenting their children
- Clients are being connected to community resources that can support them long term



# Areas for Improvement & Future Goals

- Housing
- Substance Abuse Treatment
- Cultural Competency
- Racial Makeup in Programs
- Mental Health Assessment and Treatment
- Build a mental health (diversion) team
- Incorporate more certified peer supports
- Ensure quicker connections to service and treatment
- Enhance information sharing

# Questions?

- Why intervene at the front end of the system?
- What is the importance of allocating resources to the Early Interventions Programs for local criminal justice stakeholders?
- What is the importance of Early Interventions Programs to the participants and the greater community?