

Milwaukee County
OD-PHAST Update

Milwaukee
Community Justice
Council Meeting of
the Whole



February 23, 2022



Background

- 3-year, grant funded project through federal Bureau of Justice Assistance (BJA)
- Comprehensive Opioid, Stimulant, and Substance Abuse Program (COSSAP)
- County-level through Medical Examiner's Office
- Focus on preventing overdoses and fatal overdoses in particular
 - Critical with over 540 fatal overdoses in 2020 and anticipating more than 640 fatal overdoses in 2021
- Bringing multi-disciplinary partners together

OD-PHAST Capacity Building

1

Expand the social worker positions at the medical examiner's office and the role to include interviews with next of kin

2

Add a toxicology staff member at the ME Office to increase capacity to deliver timely toxicology findings

3

Connect with the Milwaukee Community Justice Council's Executive Team to expand capacity for recommendation implementation

OD-PHAST Guiding Principles

North Star: Our shared goal is to reduce overdoses in Milwaukee County.

We recognize substance use disorder as a chronic, treatable disease.

We will use multi-sector data responsibly to inform response strategies.

We share accountability for reducing overdoses.

OD-PHAST Composition

Overdose Fatality Review (OFR) Team

Multi-disciplinary, in-depth review of individual fatalities to identify gaps in service or barriers to care

Data Strategy Team (DST)

Multi-disciplinary, analysis of near real-time aggregate data to identify trends in overdose and substance use disorder care and treatment

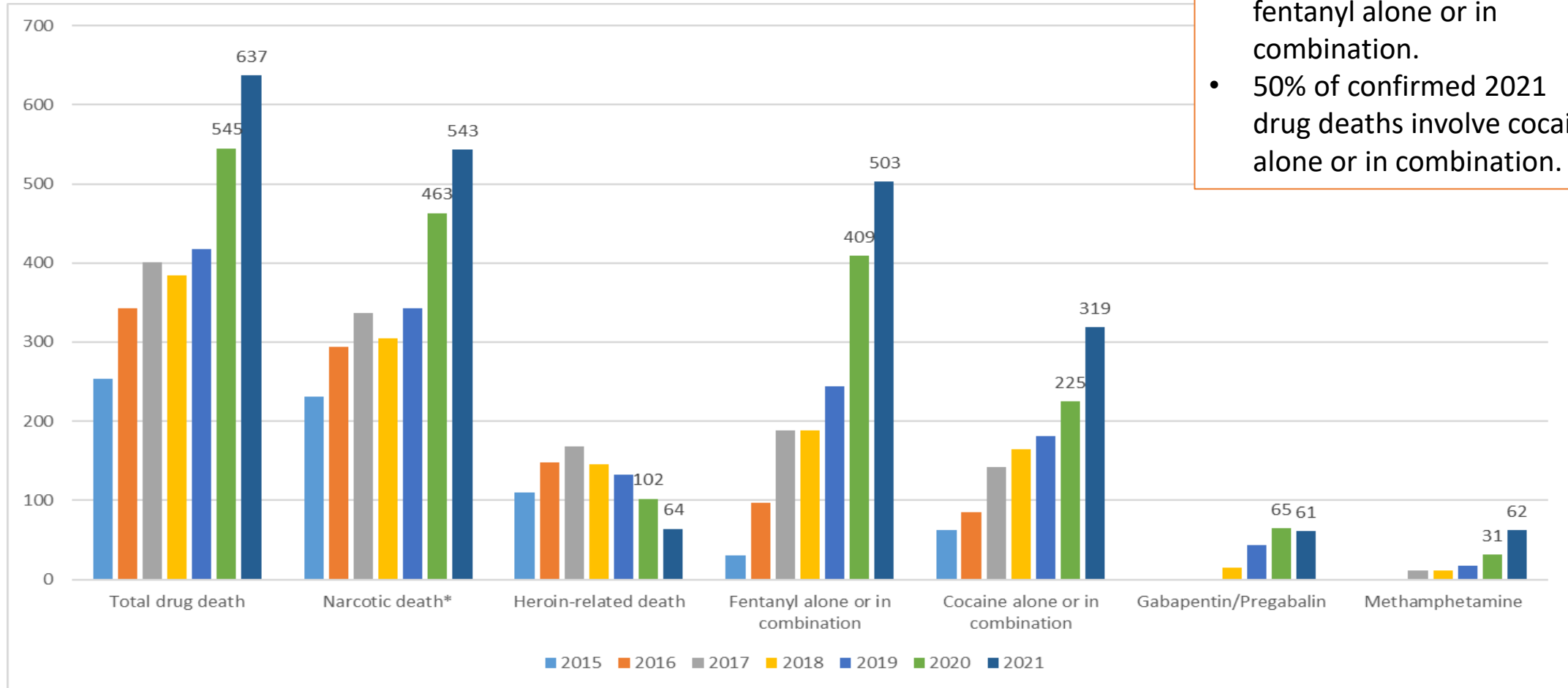
Shared Goal

Develop and implement recommendations to prevent future overdoses

Drug Deaths, Milwaukee County, through February 21, 2022

(sent by the Medical Examiner's Office 2/21/2022)

- Key takeaways:
- 79% of confirmed 2021 drug deaths involve fentanyl alone or in combination.
 - 50% of confirmed 2021 drug deaths involve cocaine alone or in combination.



*Narcotic drug deaths are any in which opioids (morphine, heroin, etc.) or synthetic opioids (oxycodone, fentanyl, etc.) are involved

Comparison of Drug Deaths 2020 to 2021

(sent by the ME office on 2/28/22)

2020 (Jan. – Dec.) (confirmed fatal overdoses)	2021 (Jan. – Dec.) (confirmed + suspected fatal overdoses)	% change
545	642 confirmed	18% increase

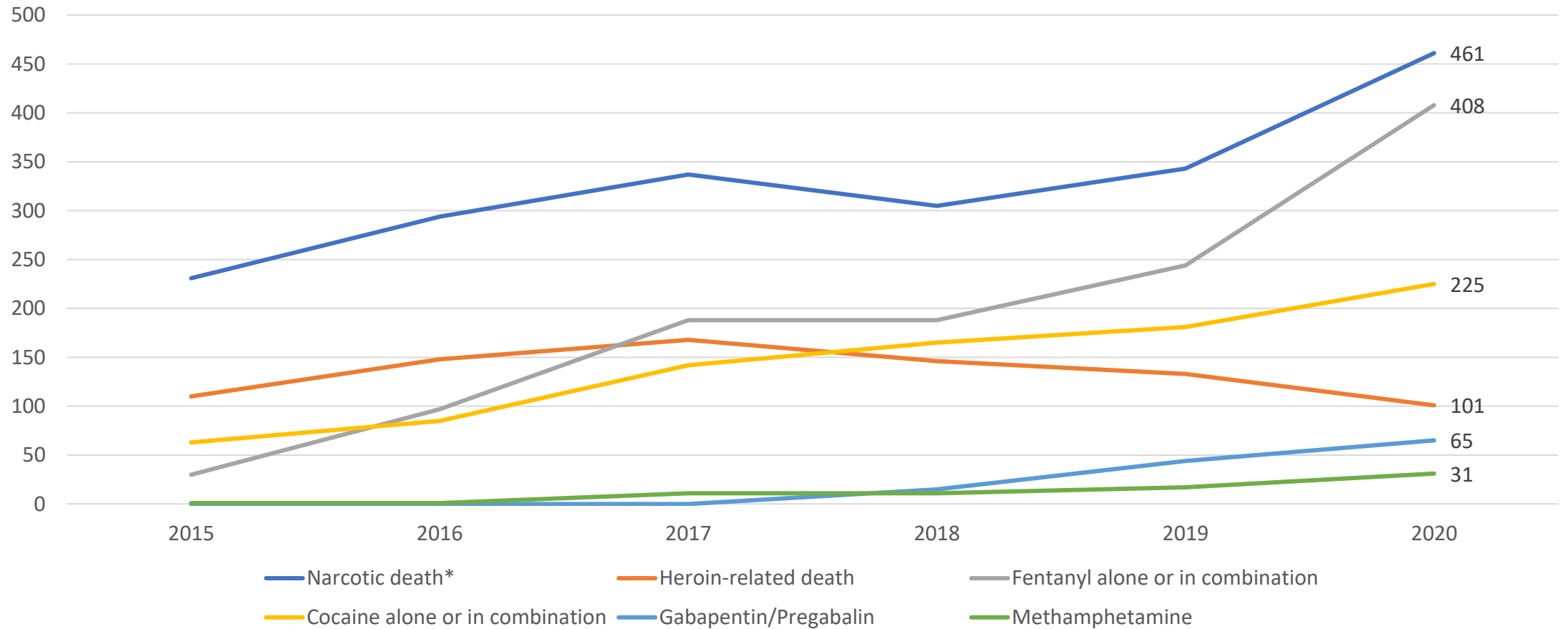
Data considerations

Fatal overdose data comes from the Milwaukee County Medical Examiner's Office. The ME Office has jurisdiction over all drug deaths that occur in our county.

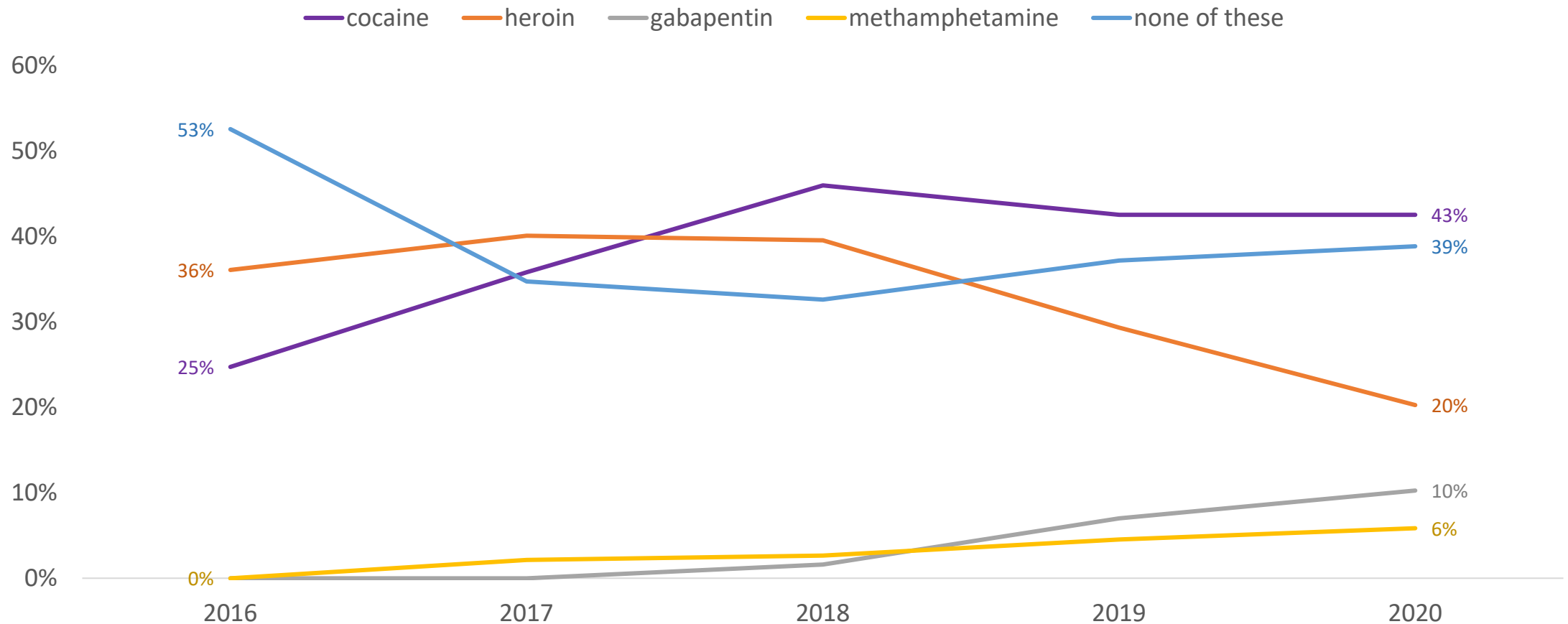
All deaths indicated as drug deaths by the forensic pathologists are included. This will include individuals who die in Milwaukee County but may reside outside of Milwaukee County and includes all manners of drug deaths (accident, suicide, homicide, and undetermined), which typically accounts for a small percent of the total drug deaths.

Data points include the age, race/Hispanic ethnicity (as one variable), incident address, residence address, immediate cause of death, manner of death. Only incidents that could be geocoded are included on the maps.

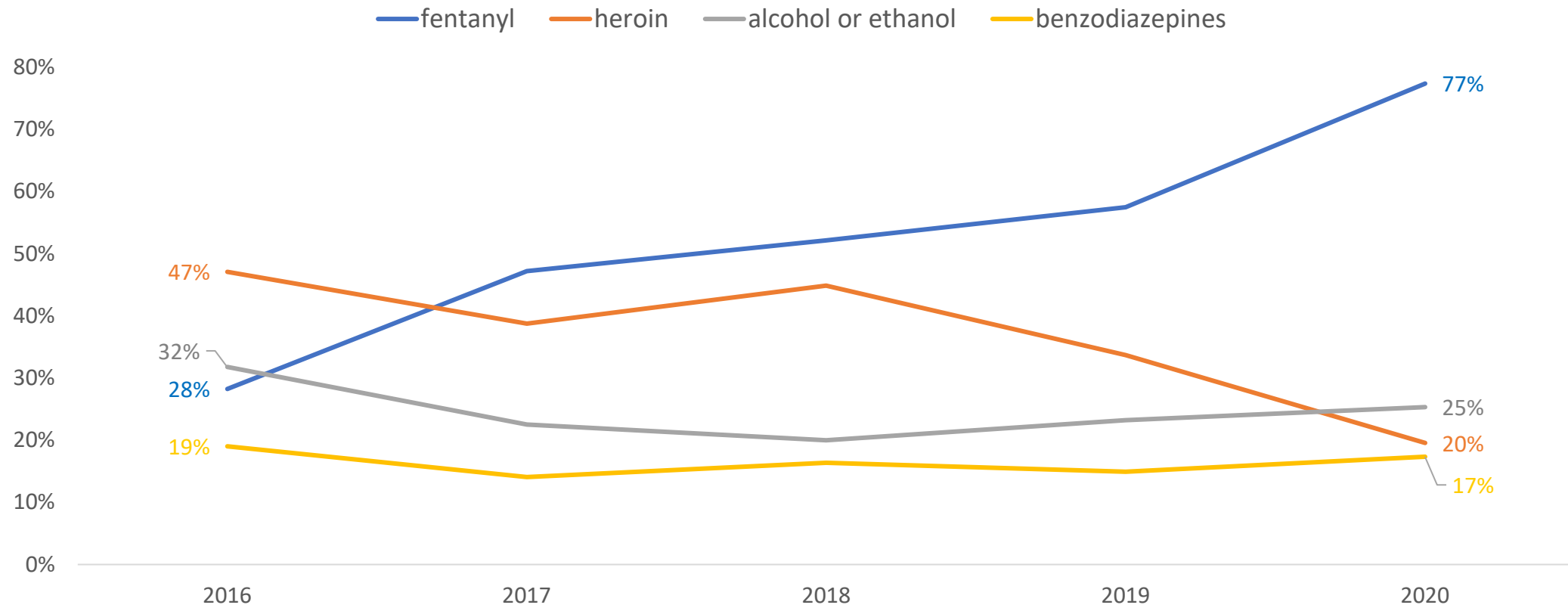
Trends in drug deaths, Milwaukee County, 2015-2020



Percent of deaths involving fentanyl which also included these specified substances

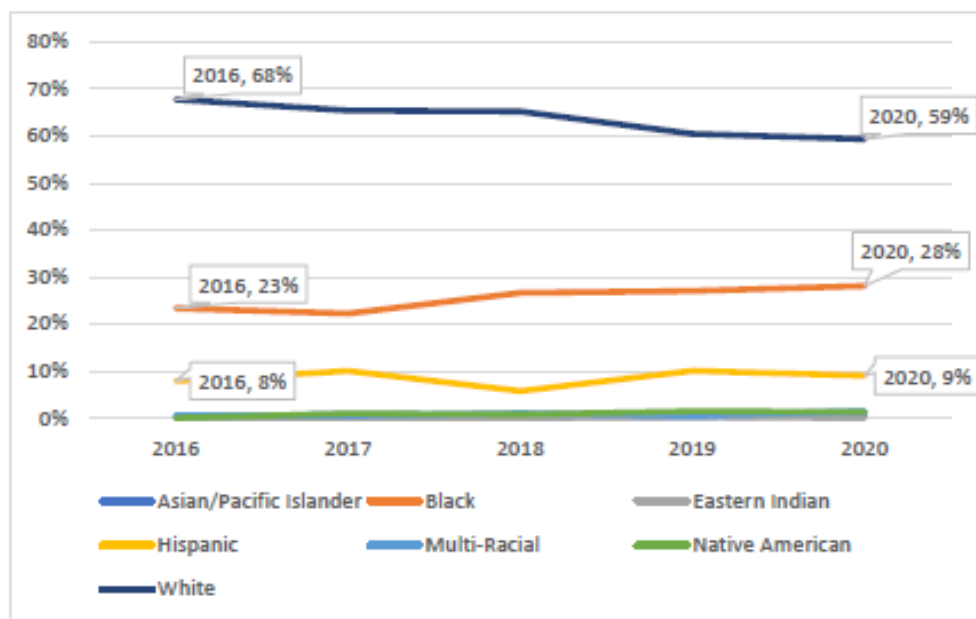


Percentage of deaths involving cocaine that also include specified substance



Fatal Overdose Trends, Milwaukee County, 2016 – 2020

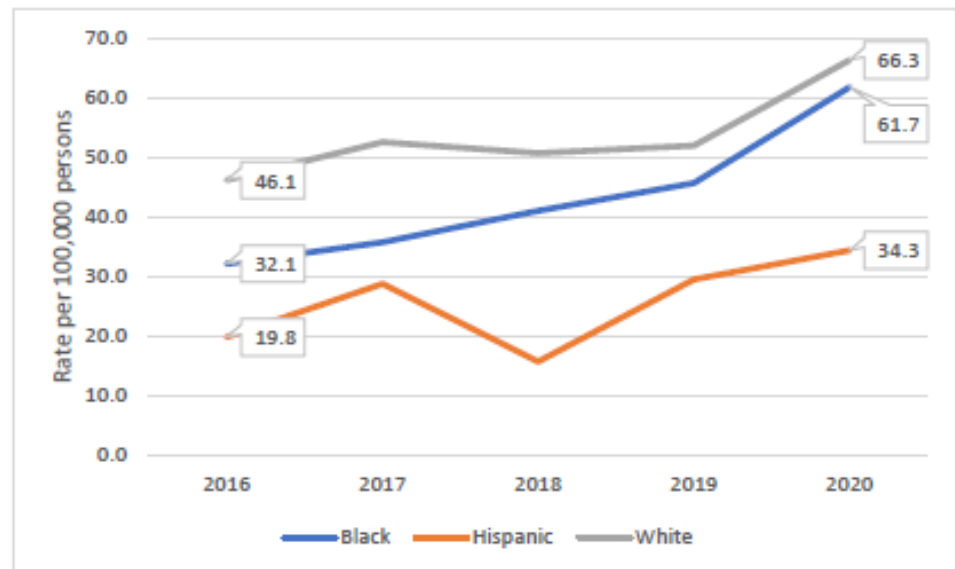
Milwaukee County Medical Examiner's Office Data - Deaths Across All Demographic Groups



From 2016-2020, the percentage of drug deaths that were among Black individuals has gradually increased from 23% to 28% and decreased among White individuals from 68% to 59%. The percentage of drug deaths among Hispanic individuals is similar from 2016 to 2020.

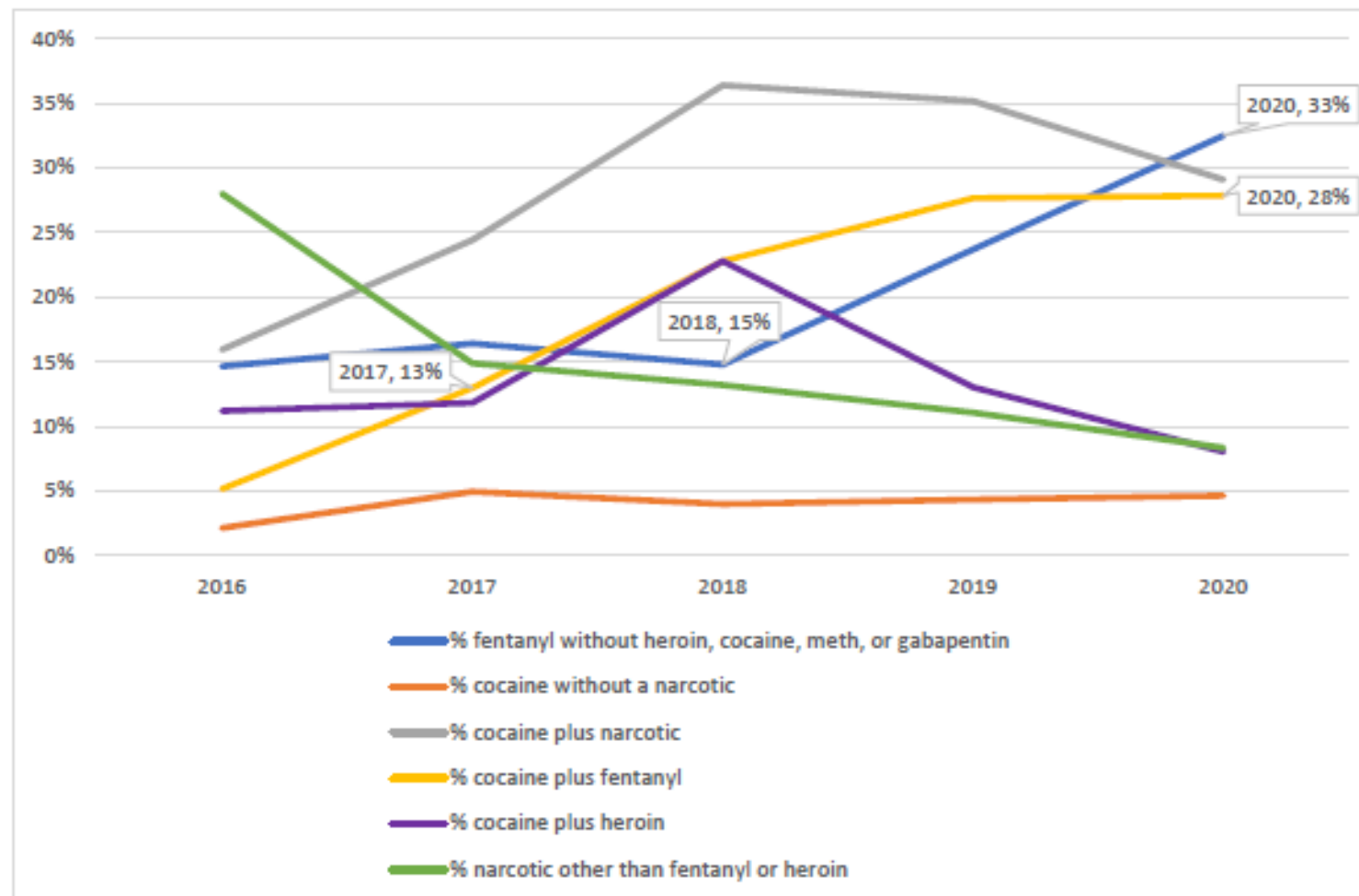
Note: Rates calculated using ACS 5-year estimates.

From 2016-2020, the rate of drug deaths rose 44% for White individuals, 92% for Black individuals, and 74% for Hispanic individuals.



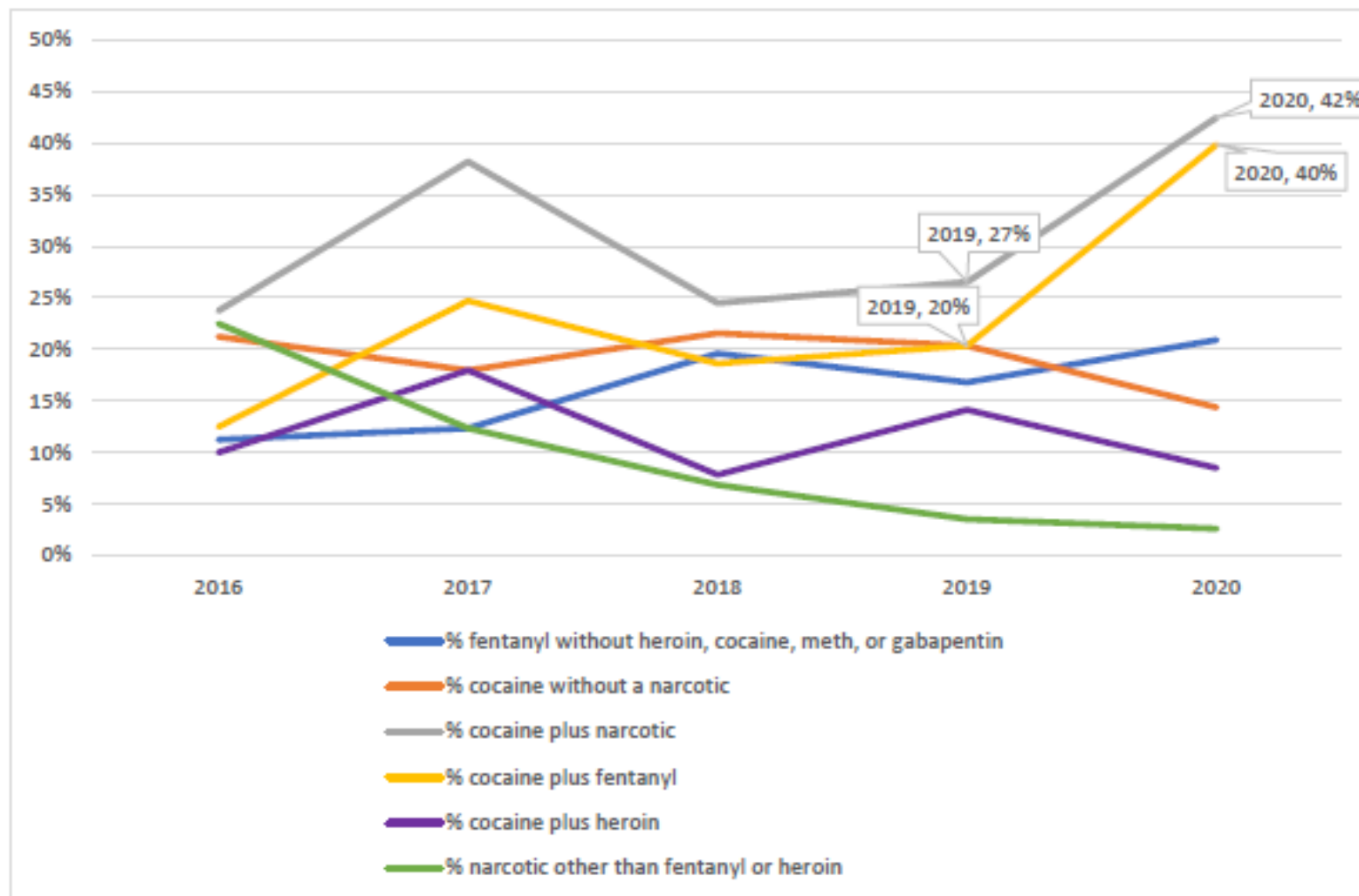
Deaths among White Individuals

The percentage of drug deaths involving fentanyl without heroin, cocaine, meth, or gabapentin rose steeply from 2018 to 2020 among White individuals. The percentage of deaths involving fentanyl and cocaine rose more gradually from 2017 to 2020.



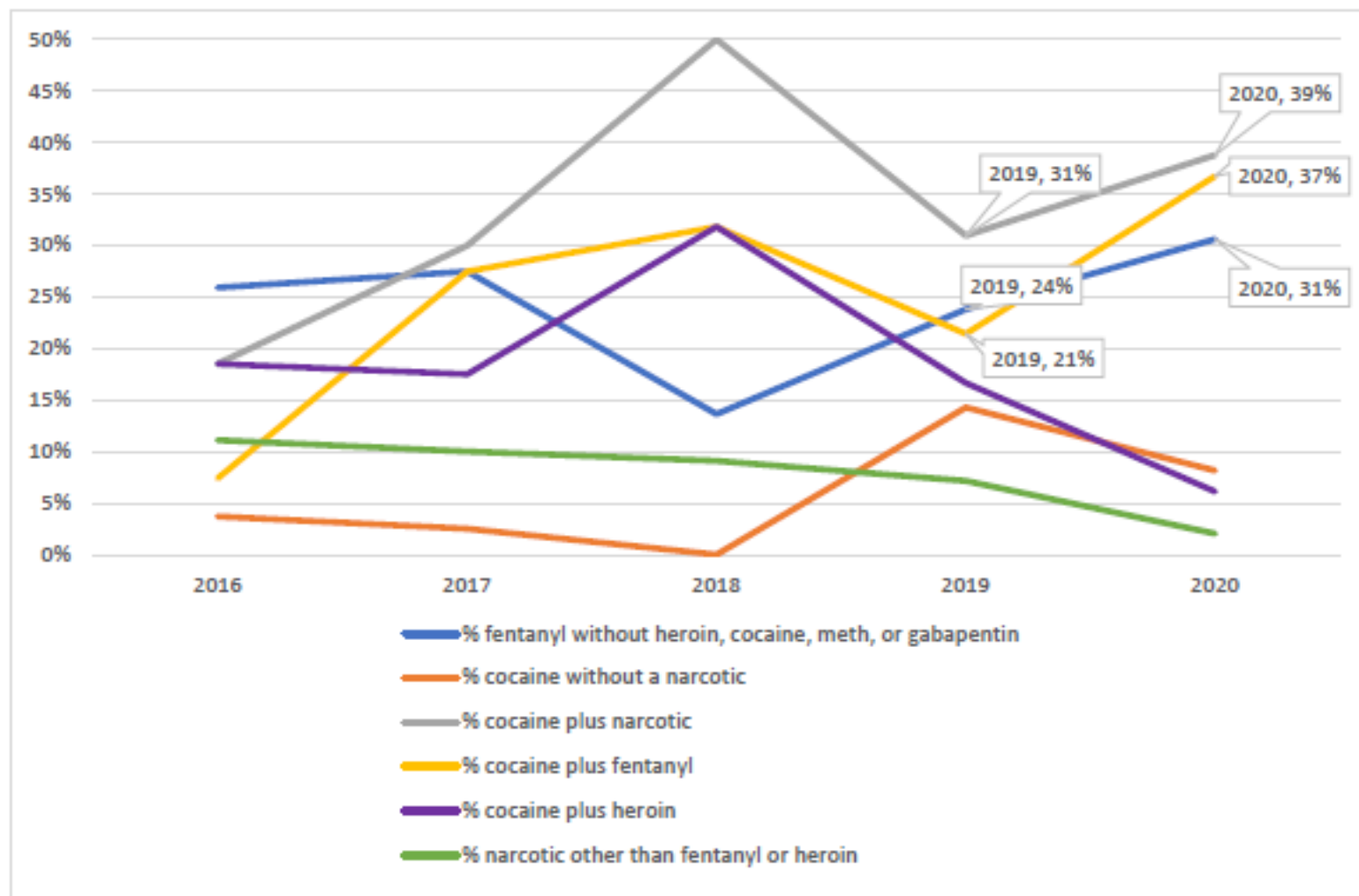
Deaths among Black Individuals

The percentage of drug deaths involving cocaine and a narcotic, specifically fentanyl, rose steeply from 2019 to 2020 among Black individuals.



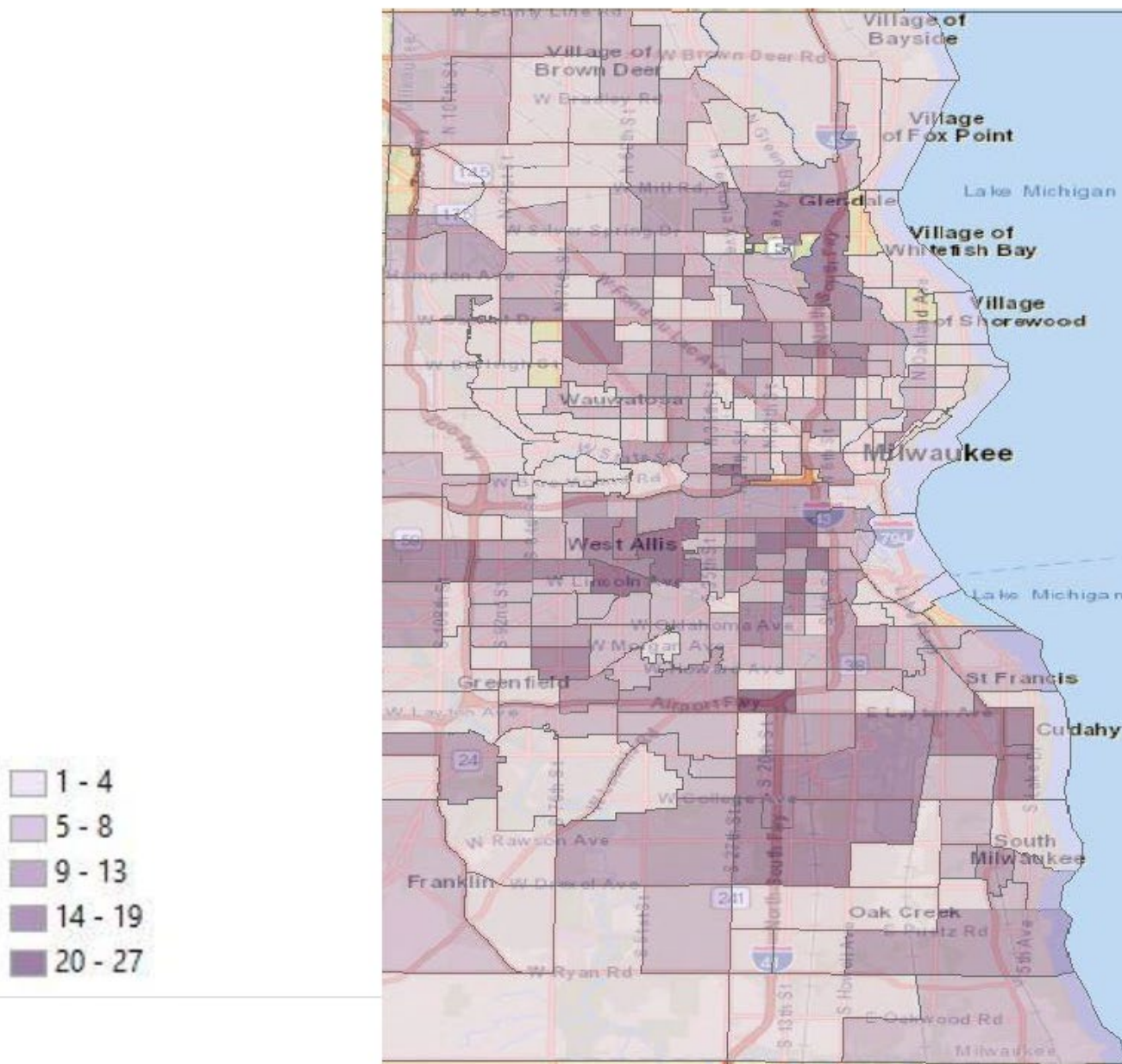
Deaths among Hispanic Individuals

The percentage of drug deaths involving cocaine and a narcotic, specifically fentanyl, rose steeply from 2019 to 2020 among Hispanic individuals. The percentage of deaths involving fentanyl without heroin, cocaine, meth, or gabapentin also rose.



Fatal Overdose Trends, Milwaukee County, 2016 – 2020

Milwaukee County Medical Examiner's Office Data – Drug Deaths Across All Demographics Groups



While there are some areas that have a higher concentration of drug overdose deaths, deaths in our community are relatively evenly distributed across the county.

Census tracts are roughly the size of a “neighborhood” and have less variation in population than larger groupings, such as zip code.

Action team	Recommendation	Linkage to SWOT analysis
Education and awareness action team	Develop a social media package for overdose prevention and education that may be used by community partners.	Weaknesses: <ul style="list-style-type: none"> •There is stigma in the community associated with substance use disorder and treatment. •Social determinants of health and systemic racism contribute to overdoses in our community.
Fentanyl action team	Investigate the co-occurrence of cocaine and fentanyl in overdose incidents in Milwaukee County to tailor prevention and intervention strategies.	Weaknesses: <ul style="list-style-type: none"> •Changes in drug trends create challenges to preventing fatal and nonfatal overdoses, particularly those related to the increase in fentanyl and fentanyl analogs. •Need for increased data sharing and collaboration.
Treatment and support services action team	Increase public support for additional treatment locations within the city of Milwaukee.	Weaknesses: <ul style="list-style-type: none"> •There is stigma in the community associated with substance use disorder and treatment. •Social determinants of health and systemic racism contribute to overdoses in our community. Threats: <ul style="list-style-type: none"> •Political buy-in can be difficult to achieve with multiple jurisdictions.

Recommendation update

Requesting implementation
funds from DHS to be used by
August 31, 2022

- OFR - Increase the awareness of the risks of and harm reduction strategies for fentanyl among individuals whose drug of choice is cocaine
- OD-PHAST Data Strategy Team – Education and awareness action team: Develop a social media package for overdose prevention and education that may be used by community partners



Milwaukee County OD-PHAST Update

Questions/Comments?



VR-PHAST

Violence Response - Public Health and Safety Team Overview

Updated February 23, 2022

Homicide and Nonfatal Shooting Victims

- Unprecedented years in 2020 and 2021 for the number of victims of homicides and nonfatal shootings
- Increase of 73% from 2019 to 2020 and 12% from 2020 to 2021
- Year-to-date 2022 has also demonstrated an increase over 2021

Figure 1. Homicide and NFS Victim Frequency by Year, 2015-2021

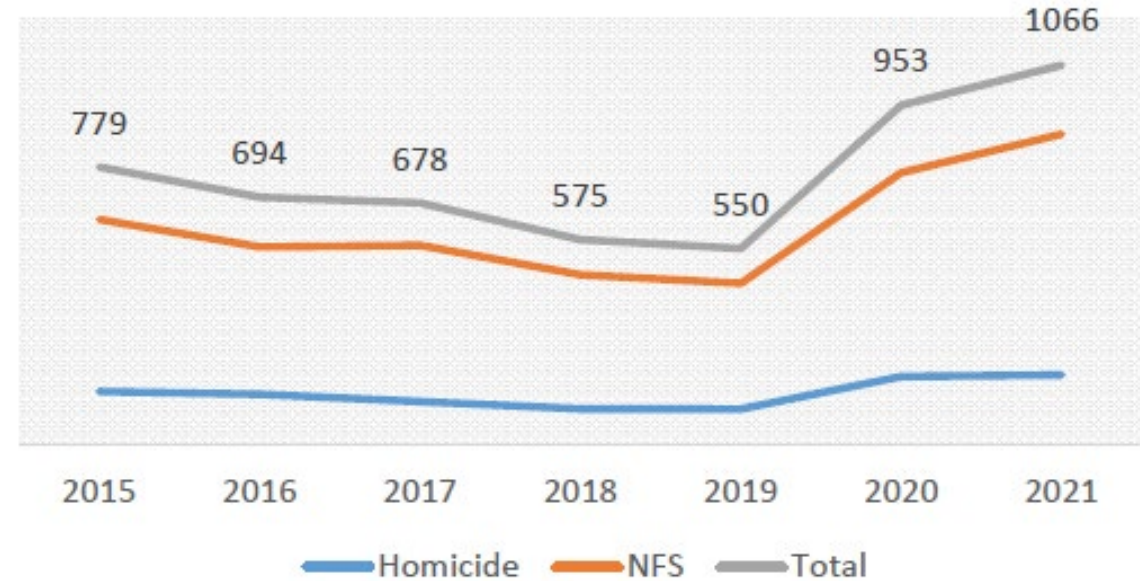
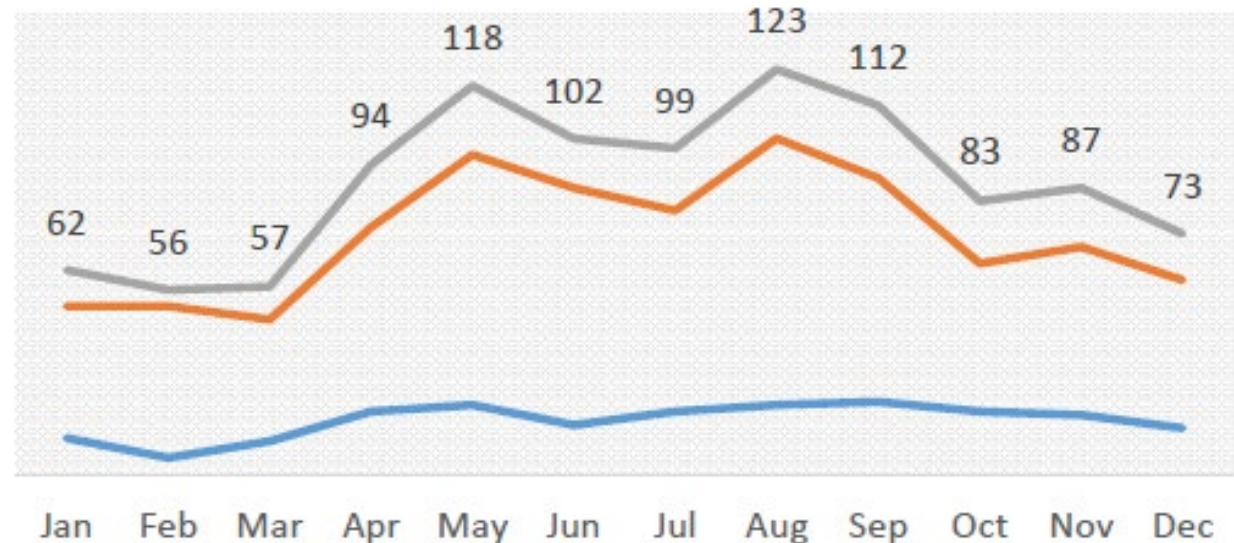
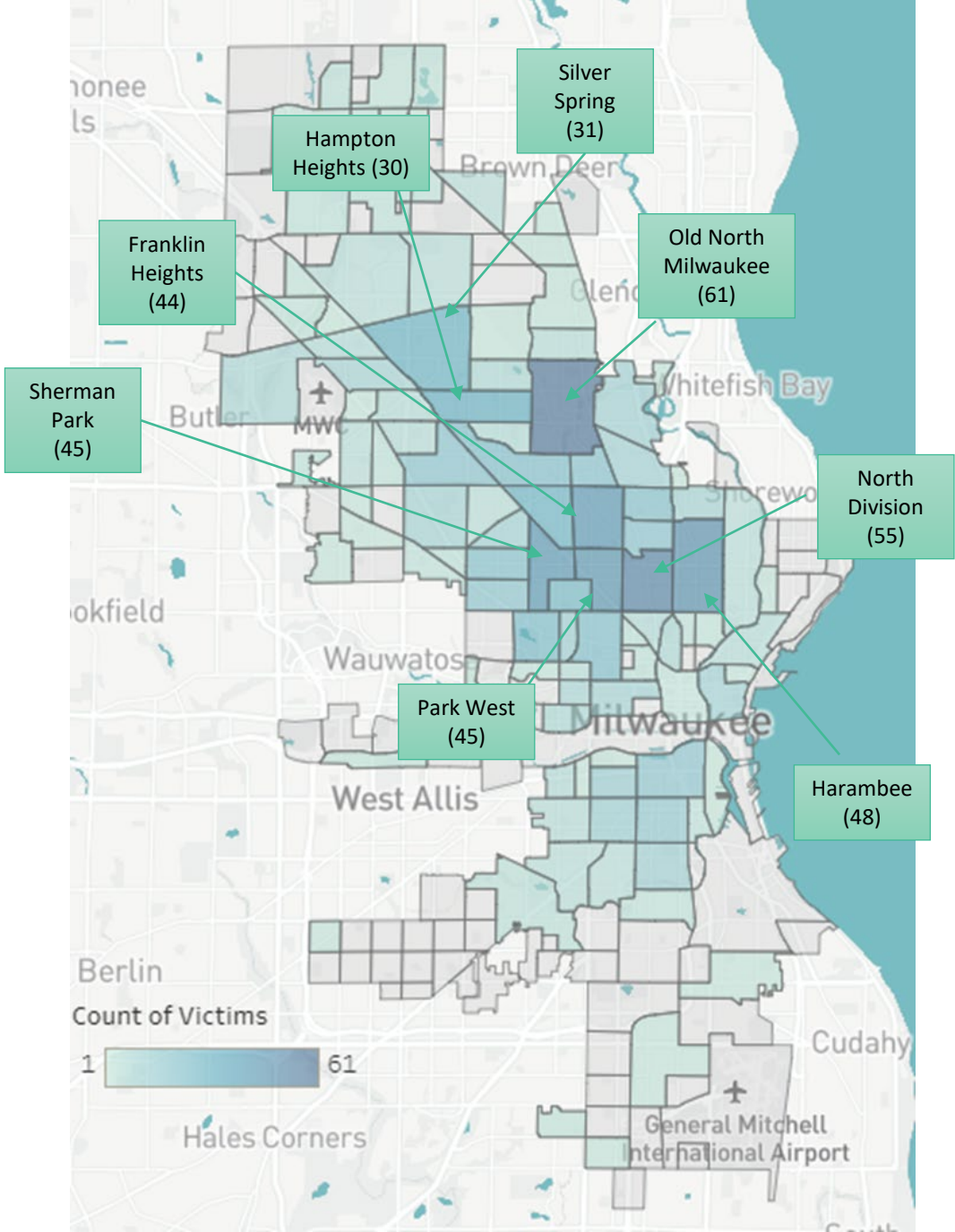


Figure 2. Homicide and NFS Victim Frequency by Month, 2021



Homicide and Nonfatal Shooting Victim Distribution by Neighborhood 2021



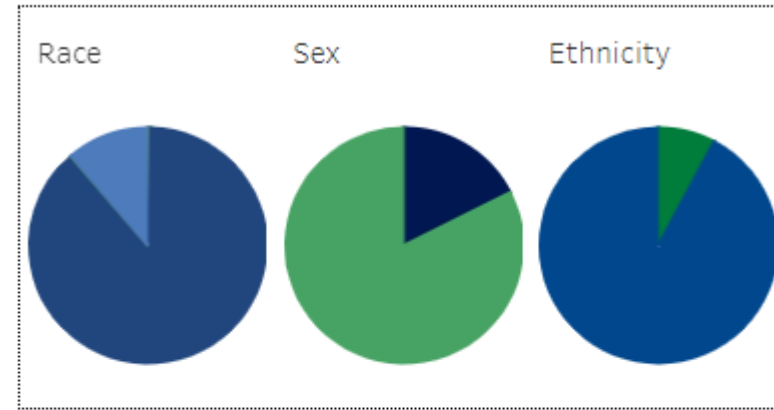
Labels included for 8 neighborhoods with highest number of victims; includes all incident types

Source: Milwaukee Police Department and Milwaukee Homicide Review Commission
Incidents through 12/31/21

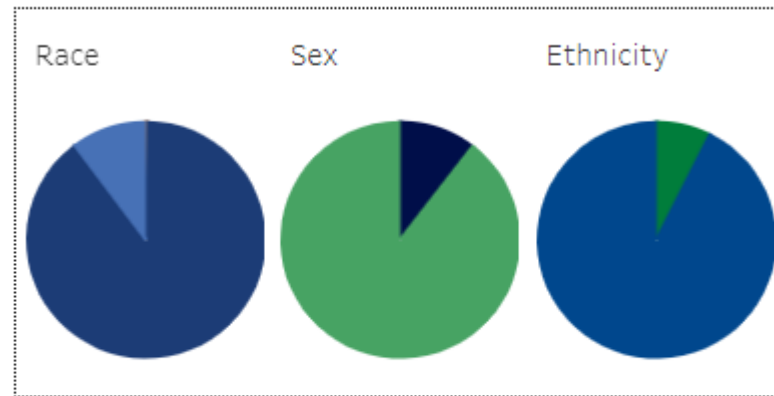
2021 Homicide and Nonfatal Shooting Victims and Suspects

- Majority of incidents involved a handgun
- Majority of incidents were unknown primary factor or argument/fight

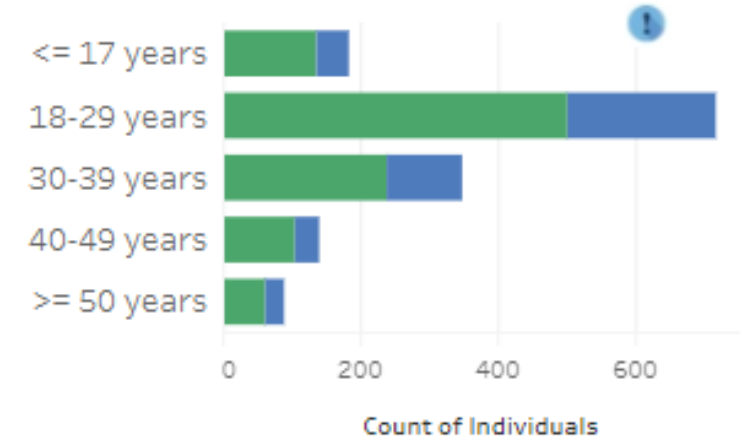
Victims



Suspects



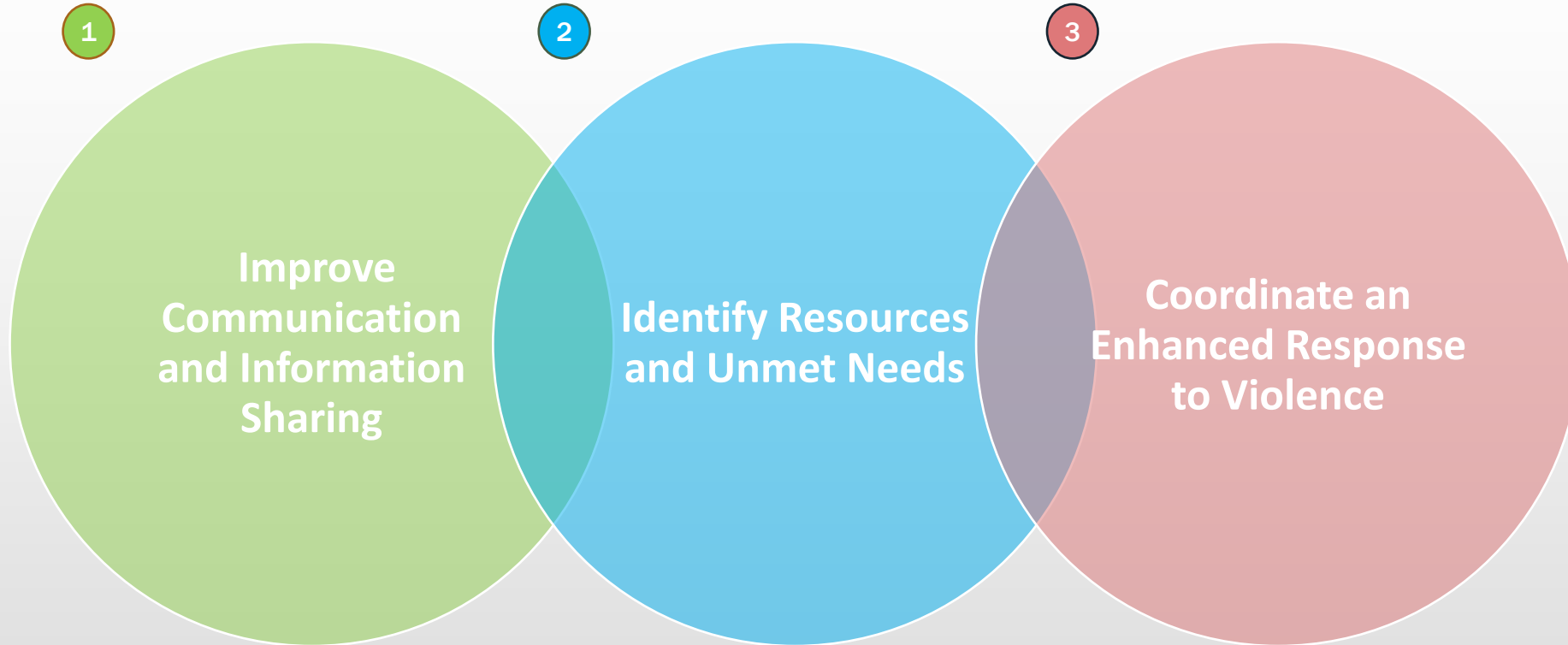
Victim and Suspect Age Range



Person Involvement



VR-PHAST: Violence Response Public Health and Safety Team Goals



Mission: To coordinate a unified, multi-sector public health and public safety response to reduce the impact of firearm violence and homicides on individuals, families, and the community in collaboration with partners across Milwaukee County.

VR-PHAST Approach

- Bi-weekly meetings
- Review of data
 - Discussion of incidents since previous meeting
 - Monitoring for broader trends
 - Incorporate information learned from case-level reviews
- Identify short-term response needs
 - Objectives as outcome of each meeting
 - Follow-up between and report out at next meeting
- Identify longer-term response needs and prevention opportunities
 - Gaps in services and resources
 - Prevention strategies (primary, secondary, tertiary)
 - Public health perspective

Criminal Justice
MCLEEA, MPD,
WI DOJ, USAO,
MCSO, FBI

Healthcare
MCW, Children's,
Froedert, MHCP,
Aurora,
Ascension

Public Health
Health
Commissioner,
Local Health
Depts, WI
DHS

Mental Health
Behavioral
Health Division

**Emergency
Response**
OEM, MIH, Fire/
EMS

**Fatality
Response**
Medical
Examiner

**Violence
Response**
OVP, 414Life

City of
Milwaukee
Mayor

Milwaukee
County
Executive

District Attorney

City Attorneys

Policy and guidance direction

Facilitation Team

OVP	MPD	Emergency Management
MFD/MIH	MHRC	CJC DHHS

**VR-PHAST
Violence Response -
Public Health and
Safety Team**

DRAFT

6/24/21

Initiative Coordinated through the Milwaukee Community Justice Council (CJC), the Milwaukee Homicide Review Commission (MHRC), and the Office of Violence Prevention (OVP)

Data Team

		MFD
MPD	MHRC	OEM
CIC	ME	DYFS
		Violence data team

Supported by detailed incident reviews

Implementation

Public Safety

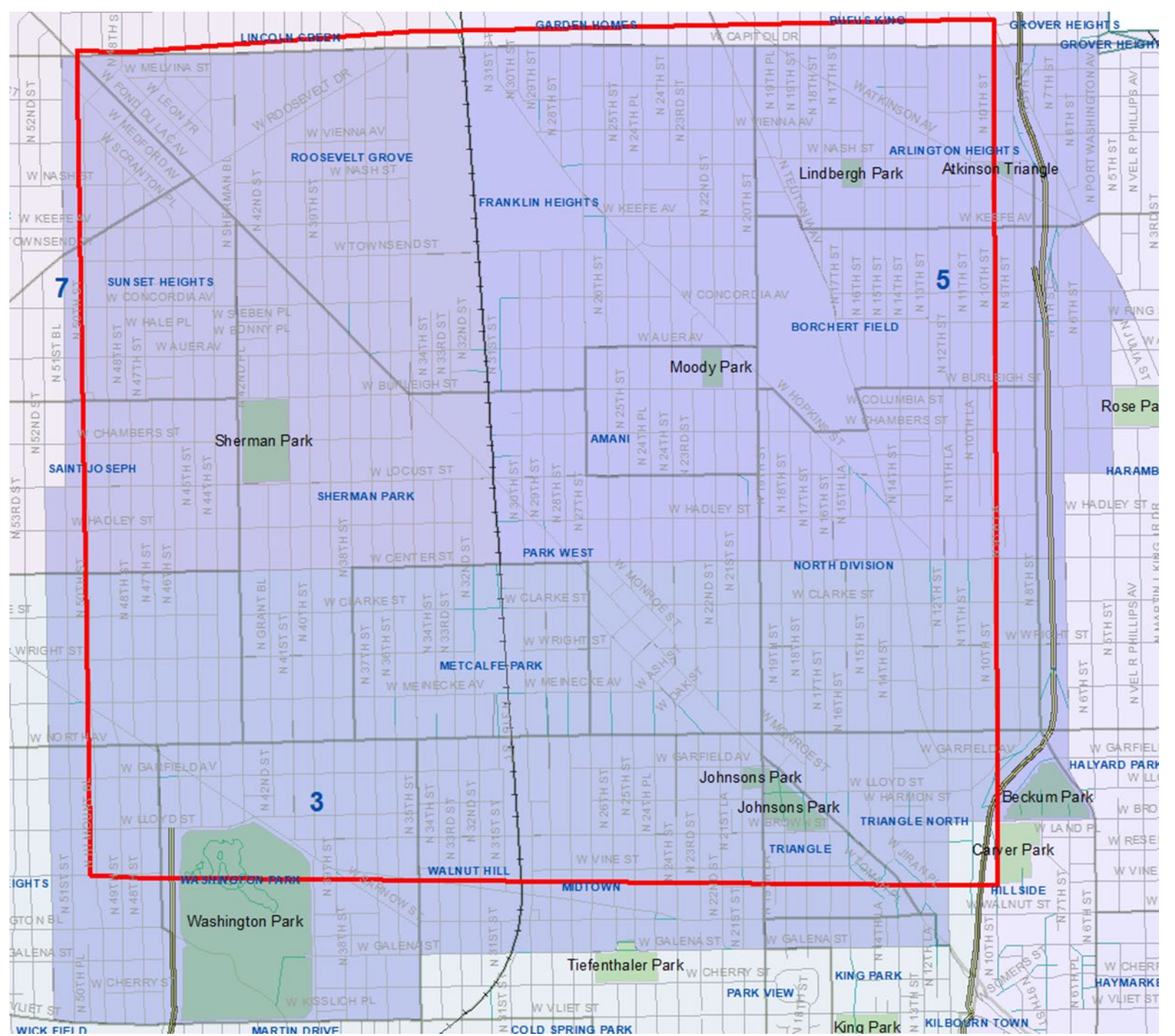
Public Health and Community Response

Joint Information Center (JIC)	Law Enforcement/ Sheriff's Office	Fire/EMS	MCDAO - Community Prosecution	Project Safe Neighborhoods - USAO, MCDAO	Local Health Depts	Office of Violence Prevention	Advocates/Crisis Response	Project Ujima	414Life/Froedert	Comprehensive Injury Center
Courts/Pretrial	Department of Corrections	Jail/House of Correctons	Public Defender	Office of Emergency Management	Trauma Response Team	DHHS - Youth and Family Services, Housing Division	Safe and Sound	Sojourner Family Peace Center	Community Service Providers and Faith-Based Organizations	Milwaukee Public Schools

Focus area

Capitol Dr to Vine St;
N 50th St to N 10th St
~6 square mile area

- Approximately 36% of the total victims of homicides and nonfatal shootings in 2021
- Less than 15% of the population in the city (by census tract)
- Narrowing to micro hotspots within the area – incidents are not evenly distributed





Byrne Criminal Justice Innovation Grant

- Byrne Criminal Justice Innovation Grant (BCJI)
 - Approximately \$1,000,000
 - 3-year grant
 - Collaborative application (MPD, DHHS, MHD/OVP, MCW, CJC)
 - Adding positions to multiple agencies
 - Funding for some implementation of action items
 - National Training and Technical Assistance
- Provide foundation for the VR-PHAST work
 - Coordination
 - Data team support
 - Community involvement in the planning and response
 - Funding to support implementation of action items



Action Items

- More than 70 action items have come out of the process to date
- Organized the action items into Action Teams to move action items toward implementation
- Sample action items:
 - Connecting with the Milwaukee County Housing Division for individuals/families with immediate housing needs that were victims of violence
 - Identifying youth who disengaged from school during the pandemic and finding ways to re-engage them
 - Enhancing communication between first responders and schools when violence impacts one or more students to support more immediate outreach
- Currently engaged in planning
 - Feedback from participants
 - Looking at:
 - what has been working
 - where we can make improvements
 - Identifying more specific goals and metrics



Action Teams

- **Gun violence interruption and mediation**
- **Trauma response and healing**
- **Youth/young adult engagement**
- **Referral process and resource documentation**
- **Housing**



VR-PHAST

Violence Response - Public Health and Safety Team
Overview

Questions/Comments